



# Boundary Updates

A CONSENSUS-BASED AND DATA-DRIVEN APPROACH



# A consensus-based & data-driven approach to boundary updates >

Navigating a boundary update can be tough. It is often emotional for families affected by new attendance areas, and districts can find themselves challenged to provide transparency to stakeholders.

But with our innovative mapping tools and consensus-based approach, we can help districts successfully redraw district boundaries based on community input and accurate data.





## How it works

The result of a successful boundary update is new attendance areas that satisfy the needs of both the school district and the community. We designed five steps to help you get there. Underpinning each step are accurate data and community input, so you can make informed decisions throughout the entire process.



## 01

# Use the best available data for enrollment forecasting

We develop enrollment projections by incorporating detailed enrollment assessments with land use trends. This provides an in-depth forecast of the number of students you can expect over time, not only in your district, but at each school.





## **MORE THAN A HEAD COUNT: STUDENT ENROLLMENT ASSESSMENT**

We evaluate enrollment trends, past projections, school capacities, student generation rates, and demographic and socioeconomic characteristics to help you understand your district's current student population.

## **PINPOINT POPULATION GROWTH: LAND USE ANALYSIS**

By mapping and analyzing existing and future zoning, building permits, urban growth areas, and anticipated housing developments, we can show you where new residential growth likely will occur in your district and how it will affect future patterns of growth.





02

## Reach out to the community

To engage the community, be transparent, and ensure buy-in throughout the boundary update, we can help you develop a plan of action to collect feedback on what the community feels is important when it comes to school district boundaries. Once responses are in, we compile them and analyze common themes, so you can be more informed about what values should be considered.





When making boundary updates, the district will consider factors such as:

- Growth trends and enrollment projections
- Keep siblings in the same school
- Minimize disruptions/impacts to special programs/populations

## Develop a values & principles statement

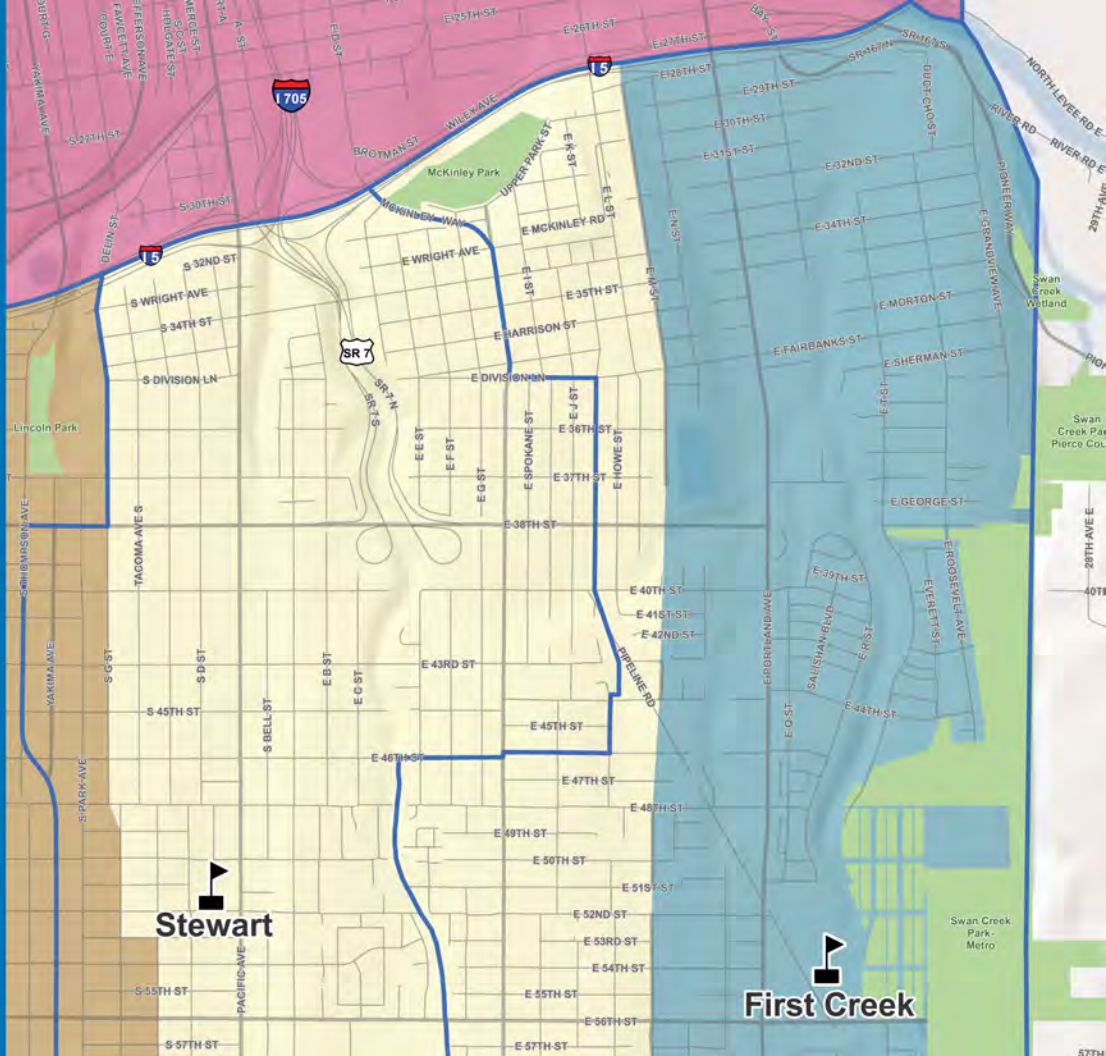
Before you start redrawing boundaries, it is important to identify and articulate a set of underlying values, core principles, and decision-making criteria against which boundaries and related transition policies will be judged. We use the enrollment forecasting and land use data from step one, combined with community surveys from step two, to help you develop these guidelines.



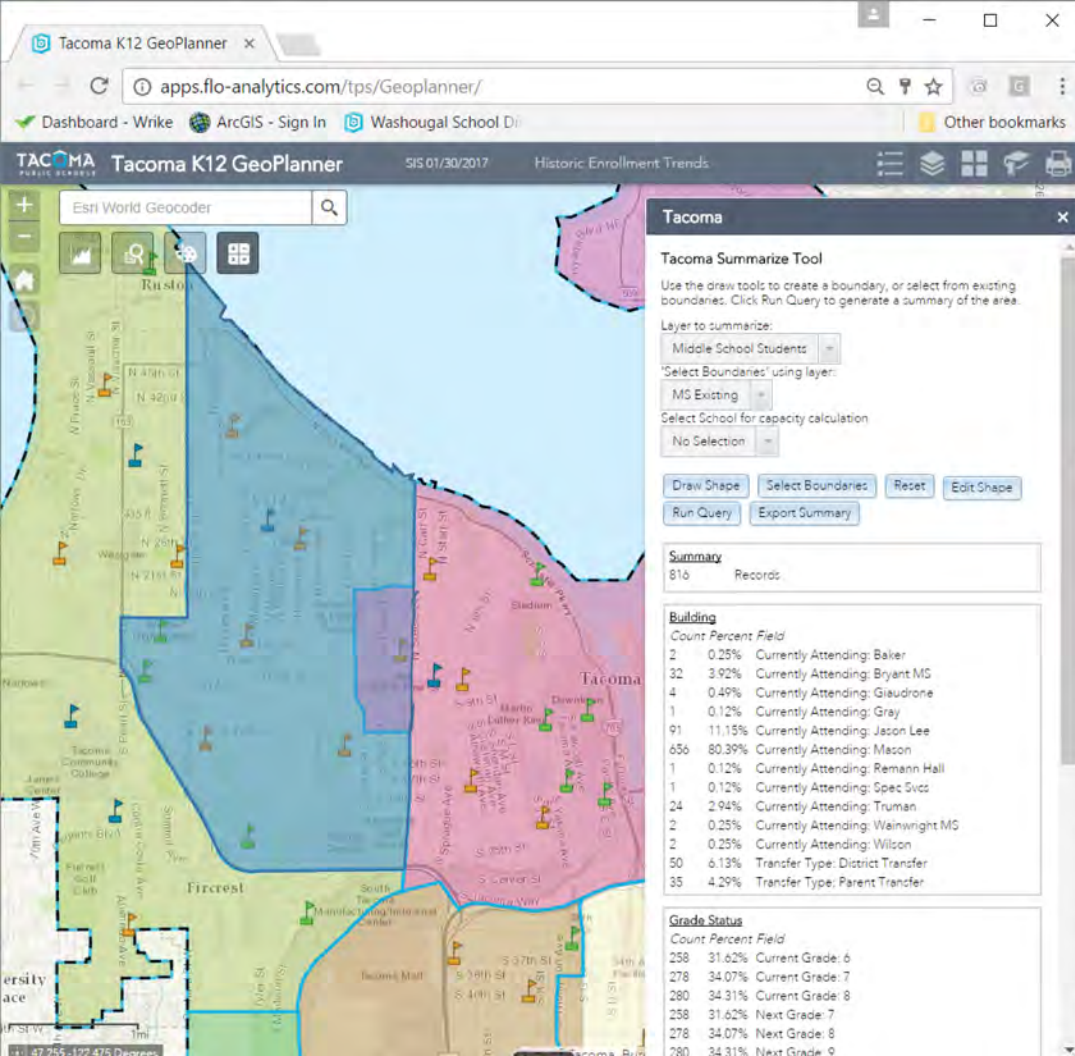
04

## Dive in with a springboard proposal

A springboard proposal is a first iteration of your new school district boundaries. We take the core values and principles statement and use mapping technology to create a physical representation of those values on a map. The result is a starting point that the boundary review committee will use to refine the springboard proposal in the next and final step.







## Collaborate with a review committee

Before finalizing boundaries, we support and facilitate a series of meetings where the springboard proposal is refined with local input from a committee made of district staff and community members.

Our interactive Web-based mapping tools enhance the committee meetings with on-the-fly scenario modeling, so you can immediately see the effects that potential boundary adjustments would have on enrollment numbers, free- and reduced-price-lunch assistance, diversity, and more, for every school in your district.

# Our work >



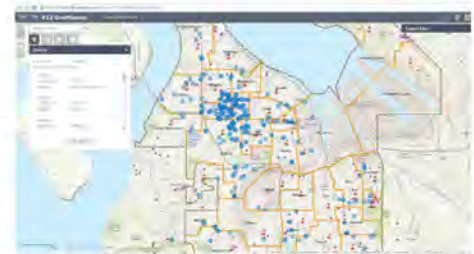
**Better Student Enrollment Forecasting**  
Burlington-Edison School District

Burlington-Edison School District needed new student enrollment projections to update their Capital Facility Plan. As our geographic approach allows us to go beyond traditional enrollment forecasting, we were able to answer the district's pressing questions, such as whether they would see increasing or decreasing enrollment, and in what attendance areas.



**Boundary Update: Washougal**  
Washougal School District

To help draw new school boundaries and adjust existing elementary and middle school boundaries accordingly, we worked with the district to complete enrollment forecasts, develop a springboard proposal, and facilitate eight weeks of boundary review committee meetings.



**Boundary Update: Tacoma**  
Tacoma Public Schools

We have assisted Tacoma Public Schools in two boundary updates: one for elementary and a second for middle schools. We provided a custom Web map application that gave immediate answers about the effects particular boundary scenarios would have on student demographics and school capacities, making on-the-fly scenario modeling possible in boundary review committee meetings.

visit [www.flo-analytics.com](http://www.flo-analytics.com) to read more about these projects



### Cachment-Level Enrollment Projections

Edmonds School District

Edmonds School District sought to make better facility planning decisions through a clearer understanding of their student population dynamics. We provided detailed catchment-level enrollment projections for all elementary, middle, and high schools in the district. We also provided a Web-based map application that allowed the district to interact with the data and view enrollment in a geographic context.



### School Siting Based on Growth Trends

Bellingham Public Schools

To help Bellingham Public Schools make more informed choices about where to site new schools, we completed a land use study, then paired it with ten-year student enrollment projections to understand how future land use trends will affect student distribution. The end result was an expanded property portfolio of potential future school sites that met the district's exact criteria.



## Boundary Update: Spokane

Central Valley School District

Central Valley School District approved 13 new elementary boundaries for the 2017–2018 school year as a result of eight weeks of facilitated committee meetings. Our team performed enrollment forecasts and provided the committee custom–and interactive–mapping tools.



# Reach out >



Tyler Vick

PRINCIPAL

[tvick@flo-analytics.com](mailto:tvick@flo-analytics.com) | 503 501 5232



Jennifer Axelrod

SENIOR GIS ANALYST

[jaxelrod@flo-analytics.com](mailto:jaxelrod@flo-analytics.com) | 503 501 2142



2815 Second Ave  
Suite 540  
Seattle WA 98121  
206 724 0616

2001 NW 19th Avenue  
Suite 200  
Portland OR 97209  
503 501 5232

[www.flo-analytics.com](http://www.flo-analytics.com)

## WHO WE ARE

We are an employee-owned GIS (Geographic Information Systems) and data analytics consulting company with experience successfully leading boundary reviews for school districts across the Northwest.